



MINING & ENGINEERING PROJECTS

AFRICA & WORLDWIDE

Established 1997

IN TIME - ON TIME - EVERY TIME



GIF Products (Pty)Ltd
Mining-Industrial-Engineering

www.gifproducts.co.za



WHO WE ARE

SUPPLIERS
STOCKISTS
AGENTS
MANUFACTURERS

GIF Products was established in 1997 and has developed expertise and know-how across a wide range of products and services, sourced from around the world. GIF Products is a Solutions company to the Engineering, Mining and Industrial sectors.

Specialising in sourcing, engineering and fabrication solutions to mining and industrial projects on the African continent.

The Company is financially stable and has sufficient capability and resource to support the projects of any fabricator, engineering organisation or construction company in Africa.

Our staff are highly trained and fully committed to project service delivery and have expertise and capabilities across all disciplines.

GIF Products has in-house technical detailing capability to produce Engineering and Construction drawings



GIF Products (Pty)Ltd
Mining-Industrial-Engineering



GIF Products (Pty)Ltd
Mining-Industrial-Engineering



OUR FOOTPRINT

GIF Products has serviced many remotely located projects throughout Africa and in particular in Central and North Africa

IN TIME - ON TIME - EVERY TIME

We pride ourselves in our level of service, which is unmatched in the Industrial, Engineering and Mining sectors. We supply anywhere throughout Africa and globally, in time, on time, every time.





SERVICES

Solutions company to the mining, industrial and engineering projects – We add value throughout the entire supply chain process.

We source locally and internationally

Technical capabilities which include extraction from drawings to create Bill of Materials,

Fabrication of Pipework, tanks & structural steel - Detailing, profiling, bending, welding etc.

Quality Assurance and Quality Control throughout the project, includes 3rd party inspections and SGS or BV inspections where required

Checking and verifying material certificates which can be provided on request as well as full data books for projects

Distribution/Logistics including packing and lashing

Added value, project management

Our new branch in Zambia is up and running to deepen our footprint in the African Continent

**MAKING IDEAS
HAPPEN**

GIF Products (Pty)Ltd
Mining-Industrial-Engineering

PRODUCT RANGE

WORLDWIDE SOURCING	FABRICATION	SPECIAL MATERIALS (LOCAL/IMPORTED)	PLASTIC	ELECTRICAL	LABORATORY EQUIPMENT	SAFETY	OTHER
B7, B8, B8M STUD BOLTS	TANK STIFFENERS	DUPLEX/ SUPER DUPLEX PIPING	HDPE PIPING	ELECTRICAL COMPONENTS	GAS DETECTORS	BOOTS	CONCRETE RAIL SLEEPERS
BELLOWS	ADAPTER FLANGES	ANTI VIBRATION PADS	HDPE PIPE FITTINGS	INSTRUMENTATION COMPONENTS	SPECTRO ASP	JACKETS	CORRUGATED UNDERGROUND PIPE
CRANE RAIL	CAST-IN PLATES/PUDDLE FLANGES	CORROSIVE PROTECTION PAINT	PVC PIPE & FITTINGS	INSULATORS	FLOW CELLS	CONTI-SUITS	RAIL SUPPORT SYSTEMS
CS/SS PIPE FITTINGS	CONVOLUTED BELLOWS	CULVERT MATERIALS	U-PVC PIPE & FITTINGS	THERMOWELL		EYE WEAR	INDUSTRIAL WASHING MACHINES AND TUMBLE DRIERS
CS/SS PIPING	CS/SS PIPING SPOOLS	DELTAFLX FLANGES	SUMP LINER TANKS	ELECTRIC MOTORS		HARD HATS	OFFICE EQUIPMENT AND STATIONERY
CS/SS PLATE STEEL	CS/SS ROOF SHEETING (IBR AND CORRUGATED)	DUPLEX/ SUPER DUPLEX PIPE FITTINGS	HDPE STUB ENDS	MOTOR CONTROL RELAYS		GLOVES	
CS/SS STRUCTURAL STEEL	FOUNDATION BOLTS (HD BOLTS)	FLANGE COVERS	POLYETHYLENE SHEETING	TERMINATION KITS		FIRE EQUIPMENT	
GASKETS OF ALL TYPES (SPIRAL WOUND/ RING, FULL FACE ETC.)	GRATING & STAIR TREADS	FRP GRATING		GENERATORS		MASKS	
Gr4.8/Gr.8.8 FASTENERS	H BEAMS	HILTI EQUIPMENT				SANITIZER	
HYDRAULIC CYLINDER JACKS	HYDRAULIC DOORS	HILTI ANCHORS AND STUDS				SLINGS	
INDUSTRIAL HOSES	JACKETED PIPING	IVECO PARTS AND SWITCHGEAR				LIFTING EQUIPMENT	
INSULATION MATERIAL	LARGE DIA FORGED FLANGES	LAP JOINT FLANGES				SAFETY HARNESSSES	
LIFTING EQUIPMENT	LIGHTENING MASTS	PLUG VALVES				LIFTING LUGS	
OIL ABSORBENT ROLLS/PADS	LIP CHANNEL	PSV VALVES					
PUMPS	NOZZLES	WELDING CONSUMABLES					
RAIL	PIPE SUPPORTS	WELDING EQUIPMENT					
REBAR	SHIM PLATES						
RUBBER MOUNTINGS	SOLE PLATES						
SAFETY EQUIPMENT	SPACER RINGS						
SANDING AND GRINDING DISC	SS/CS FLANGES OF ALL TABLES						
STEAM TRAP VALVES	STEEL STRUCTURES						
TARPAULINS	STEP LADDERS						
TOOLS & EQUIPMENT	TANKS (SS/CS)						
VALVES	CLEAR-VU/VIGUARD FENCING						
VASTRAP PLATES							
WELDING RODS/WIRE							

GIF Products (Pty)Ltd
Mining-Industrial-Engineering





PIPES & FITTINGS

GIF Products (Pty)Ltd
Mining-Industrial-Engineering







FASTENERS

GIF Products (Pty)Ltd
Mining-Industrial-Engineering



MS-all grades
Self colour, HDG, Z/P
SS 304/316



GIF Products (Pty)Ltd
Mining-Industrial-Engineering

*HOLD DOWN
BOLTS*





STUDS & NUTS

GIF Products (Pty)Ltd
Mining-Industrial-Engineering



ASTM 193 GR.B7 & GR.B8M
STUDS



ASTM 194 GR.2H & GR.B8M
HEX NUTS & HEAVY WASHERS





GIF Products (Pty)Ltd
Mining-Industrial-Engineering

*STRUCTURAL
STEEL*



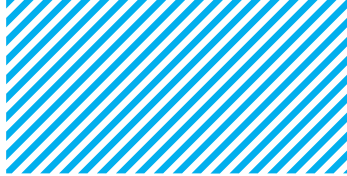




GIF Products (Pty)Ltd

Mining-Industrial-Engineering





GIF Products (Pty)Ltd
Mining-Industrial-Engineering

*LONG TERM,
SHORT TERM &
OFFICE BLOCK*







GIF Products (Pty)Ltd
Mining-Industrial-Engineering

*SAG MILL
DISCHARGE CHUTE*





JACKETED PIPE

GIF Products (Pty)Ltd
Mining-Industrial-Engineering

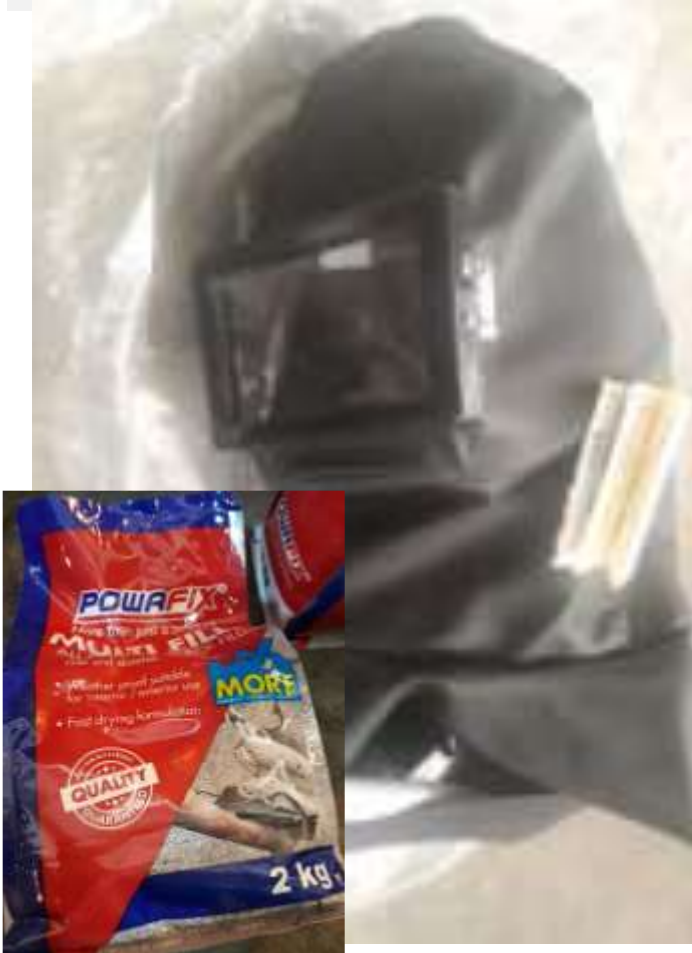




PIPE SUPPORTS

GIF Products (Pty)Ltd
Mining-Industrial-Engineering





GIF Products (Pty)Ltd
Mining-Industrial-Engineering

*IBR &
CORRUGATED
ROOF SHEETING &
CLADDING*

*STAINLESS STEEL
CHROMADEK
ULTIM, POLYPROP*





GASKETS

GIF Products (Pty)Ltd
Mining-Industrial-Engineering



Ring Joints

Metallic Gaskets

Packings



Sealing for a Safer and Greener Tomorrow

PTFE Products

Gaskets Sheet



GIF Products (Pty)Ltd

Mining-Industrial-Engineering

BELLOWS



LINKFLEX FLEXIBLE RUBBER JOINTS



- LINKFLEX JOINTS OFFER A COMBINATION OF AFFORDABILITY AND QUALITY. THEY HAVE A HIGH PRESSURE RATING - BUT A LOW SPRING RATE
- AVAILABLE ELASTOMERS : EPDM, NITRILE, HYPALON, BUTYL, NATURAL

ALL FLANGED JOINTS ARE ISO9001 CERTIFIED AND CARRY FULL LLOYDS REGISTER APPROVAL

NORMAL SIZE (mm)	STANDARD LENGTH - STYLE 11			SHORT LENGTH - STYLE 11			IMPERIAL LENGTH - STYLE 11B		
	Length (mm)	Max Pressure	Reinforcing	Length (mm)	Max Pressure	Reinforcing per kg	Length (mm)	Max Pressure	Reinforcing
25	30	1600 kPa*	750	130	1600 kPa*	700	152	1600 kPa*	700
32	35	1600 kPa*	750	130	1600 kPa*	700	152	1600 kPa*	700
40	55	1600 kPa*	750	130	1600 kPa*	700	152	1600 kPa*	700
50	105	1600 kPa*	750	130	1600 kPa*	700	152	1600 kPa*	700
65	115	1600 kPa*	750	130	1600 kPa*	700	152	1600 kPa*	700
80	120	1600 kPa*	750	130	1600 kPa*	700	152	1600 kPa*	700
100	135	1600 kPa*	750	150	1600 kPa*	700	152	1600 kPa*	700
125	170	1600 kPa*	750	150	1600 kPa*	700	152	1600 kPa*	700
150	180	1600 kPa*	750	150	1600 kPa*	700	152	1600 kPa*	700
200	200	1600 kPa*	750	150	1600 kPa*	700	152	1600 kPa*	700
250	240	1600 kPa*	500	150	1600 kPa*	700	303	1600 kPa*	700
300	290	1600 kPa*	500	150	1600 kPa*	700	303	1600 kPa*	700
350	260	1400 kPa*	500	203	1400 kPa*	500			
400	265	1300 kPa*	500	203	1300 kPa*	500			
450	265	1200 kPa*	500	203	1200 kPa*	500			
500	265	1100 kPa*	500	205	1100 kPa*	500			
600	265	1000 kPa*	500	254	1000 kPa*	500			
800	305	800 kPa*	400						
700	305	700 kPa*	400						
800	300	700 kPa*	400						
900	300	600 kPa*	400						
1000	300	600 kPa*	400						
1200	300	600 kPa*	400						

* If the operating temperature exceeds 75°C, de-rate above maximum pressure as follows:

DE-RATE PRESSURE (kPa)			
80°C	90°C	100°C	110°C
15%	33%	35%	40%

Control Rods: If one or both sides of a rubber bellows are unanchored, restraining rods should be used when the pressure exceeds:

SIZE (mm)	PRESSURE kPa
25 to 125	1500
150 to 250	1400
300 to 400	1200
450 to 600	800
650 to 800	500
900 to 1200	400



ABRASIVE BLASTING

*ALL TYPES OF
INDUSTRIAL COATINGS*

*INTERNAL & EXTERNAL
COATING OF STEEL
PIPES*

TANK LININGS

*HOT & COLD TAPE
WRAP TO STEEL PIPES*

*HOT DIPPED
GALVANISING*





**INTERNAL QA & QC
ON RECEIPT OF GOODS**



**INDEPENDENT 3RD PARTY
INSPECTIONS ON LOCAL
FABRICATED ITEMS
&
SGS INSPECTIONS ON
IMPORTED ITEMS**



**MATERIAL CERTIFICATES
&
DATA BOOKS**



TEST CERTIFICATE
(EN 10204.3.1B)

Customer: GIF PRODUCTS CC	P/O#: 16NJ001	QTY: 75PCS	INVOICE NO: JW151009L1		
Product Description: FULLY THREADED ROD					
Specification: 1-1/8"X1000MM(8UN)					
Material: ASTM A193 B7		Raw Material Heat No.: 6101202		Heat No.: JW16092202	
Surface Finish	WITHOUT	ZINC	H.D.G	BLACK	

Chemical Composition

Element %	C/%	Mn/%	P/% (max)	S/% (max)	Si/%	Mo/%	Cr/%
Requirement	0.37-0.49	0.65-1.1	0.035	0.04	0.15-0.35	0.15-0.25	0.75-1.2
%	0.39	0.82	0.018	0.008	0.27	0.21	0.99

Mechanical Properties

Test Item (20°C)	NACE Standard (Minimum)	Results
Tensile Strength (MPa)	855	981
Yield Strength (MPa)	718	865
Elongation (%)	15	20
Contraction(%)	50	61
Hardness (HRC)	≅ 35HRC	31

Dimensions

Test Item	Spec.	Inspection Results	Sampling	Rej	Remark
Go Gauge	GO	OK	75	0	OK
No-Go	NO GO	OK	75	0	OK
Appearance	OK	OK	75	0	OK

Assessor: Gary Cai

Inspector: Chen Heng

Date: 2016-10-09



SGS-CSTC Standards Technical Services Co., Ltd.

Ningbo Branch

Page 1 of 38



TESTING REPORT

SGS Report No.	IN-NB-5621-19016		
SGS Order No.	IN-NB-5621-19016		
SGS Contact Information (Coordinator Information)	Contact Person	Luna Lv	
	Telephone	+86 0574-87767006-5323	
	Email	Luna.Lv@sgs.com	
Client	GIF Products cc		
Client Contact Information	Contact Person	Miss Wang	
	Telephone	+86 13296819890	
	Email	MAGGIE@STEELSEAMLESSPIPE.COM	
Object Tested	STAINLESS STEEL WELDED PIPE		
Testing Location	Jiaxing City&Wenzhou City, Zhejiang Province, P.R.C		
Testing items	Results (Acceptable / Rejected/ Pending)		
Visual Test (inner surface and outer surface)	Acceptable		
Dimension measurement (Witness)	Acceptable		
PMI spectrum test(Witness)	Acceptable		
Document review (raw materials and Mill test certificates and RT report)	Acceptable		
Date of Testing	Jan.21 st ~ Jan.22 nd , 2019 and Jan.24, 2019	Inspector	Yanming Li

Attention: To check the authenticity of testing inspection report & certificate, please contact us at telephone: (86) 75739397143, or email: CS.Director@sgs.com



Unless otherwise agreed in writing, this document is issued by the Company subject to its General Conditions of Service printed overleaf, available on request or accessible at <http://www.sgs.com/en/Terms-and-Conditions.aspx> and, for electronic format documents, subject to Terms and Conditions for Electronic Documents at <http://www.sgs.com/en/Terms-and-Conditions/Terms-e-Documents.aspx>. Attention is drawn to the limitation of liability, indemnification and jurisdiction issues defined therein. Any holder of this document is advised that information contained herein reflects the Company's findings at the time of its intervention only and within the limits of Client's instructions, if any. The Company's sole responsibility is to its Client and this document does not exonerate parties to a transaction from exercising all their rights and obligations under the transaction documents. This document cannot be reproduced, except in full, without prior written approval of the Company. Any unauthorized alteration, forgery or falsification of the content or appearance of this document is unlawful and offenders may be prosecuted to the fullest extent of the law. Unless otherwise stated, the results shown in this report refer only to the sample(s) tested and each sample(s) are retained for 30 days only.



PROJECTS

- **SAG MILL DISCHARGE CHUTE**
- **LDX SULPHUR SLURRY DOSING TANKS**
 - **JACKETED PIPE**
 - *ACID TREATMENT PLANTS*
- **IBR 686 ROOF SHEETING IN SS316, CHROMADEK, ULTIM & POLYCARB, INCLUDING**
 - *BI-METAL ROOF SCREWS, EPDM BONDED WASHERS, SS316 BONDED ROOF SADDLES*
- **COMILOG GREENFIELDS : 800+ TON FABRICATED ITEMS FOR WAREHOUSE, OFFICE, MODULAR WASH PLANT, LONG- & SHORT-TERM BUILDINGS.**
 - *DESIGN, FABRICATE,*
- **10 TONS TITANIUM PIPE AND FITTINGS**
- **650+ TONS STRUCTURAL STEEL SUPPLIED FOR EXPORT**
- **CORROSION PROTECTION (PAINTING & GALVANISING)**

GIF Products (Pty)Ltd
Mining-Industrial-Engineering

**A SATISFIED
CUSTOMER IS
THE BEST
STRATEGY OF
ALL**



FIRST QUANTUM
MINERALS LTD.



HATCH



CLIENT REFERENCES & RECOMMENDATIONS

HATCH

58 Emerald Parkway Road, Greenstone Hill
Johannesburg, South Africa
Private Bag X20, Gallo Manor 2052, South Africa
Tel: +27 11 239 5300 • www.hatch.com
Hatch Africa (Pty) Ltd.
Reg. No. 196500723/07

18 October 2015

To Whom it may concern

Subject: GIF Products

It is a pleasure to provide this reference for GIF Products cc.

Hatch has been dealing with GIF Products cc for over 4 years in relation to the supply of shop detailed structural steelwork and walkways, including final assemblies and quality control processes, cladding and roof sheeting, hydraulic doors, vendor bought out items such as modular water tanks, windows, doors, ceilings and floor coverings for the COMMLGD 2020 Greenfields and COMMLGD TMT Program Mining projects in (Zimbabwe).

In addition, GIF Products was responsible for all third-party inspections and the logistics function to despatch items to site in (Zimbabwe).

GIF Products has consistently delivered excellent service and support to the project and have demonstrated their ability to meet project delivery requirements.

GIF Products have also assisted greatly with expedited procurement of additional items on an ad-hoc basis.

Accordingly, we have no hesitation in recommending GIF Products to any company wanting to enter into an agreement with them.

Yours faithfully,


Doug Howie
Senior Project Manager

City of
Ref.: H366994-09900-101-024-0020



Mimibula Minerals Limited

ORIGIN: MIMIBULA MINERALS (Pty) Ltd., Johannesburg, South Africa
"Zimbabwe, Zambia"

© Hatch 2015. All rights reserved. Issuing in light of the fact that it is an



FIRST QUANTUM
MINERALS LTD.

11 February 2015

To Whom It May Concern

It is our pleasure to provide this reference for GIF Products cc.

First Quantum Group companies have been dealing with GIF Products for almost 2 years in relation to the supply of structural steels, plate, grating, pipes and fittings for our Kansanshi Smelter and Kansanshi S3 Projects in Zambia.

GIF Products are a professional and reliable supplier who have generally demonstrated an ability to meet project delivery requirements and I have no problem in recommending them for this type of requirement.

Yours faithfully,



Eve Poulter
Group Procurement Manager
First Quantum Minerals Limited



P.O. Box 51388
Vista 15, Ekurhuleni
Minteville Village
Rivonia 2106, Johannesburg
4290 974041385
www.mimibulaminerals.com

Subject: Letter of reference

To whom it may concern,

This communication confirms that GIF Products cc (GIF) is listed as one of Mimibula Minerals preferred suppliers for stainless steel bolts, nuts and washers as well as other supplies.

Personally, I have dealt with GIF Products since 2008 and would recommend the company to any Project I oversee. GIF supplied various equipment of a high-quality standard to various projects in South Africa and Africa.

GIF Products has consistently delivered excellent service and support to the project and have demonstrated their ability to meet project delivery requirements.

Yours Faithfully,

Ray O'Connor
Senior Project Manager
e-mail: ray.oconnor@mimibulaminerals.com

Mimibula Minerals Limited is a subsidiary of Mosaic Resources (Pty) Ltd, a Company
Incorporated in England and Wales with Company No. 0799949



LETTER OF RECOMMENDATION.

GIF Products CC is a vendor on Ambatovy Minerals Project in Madagascar.

Over the past years GIF Products CC has supplied numerous products including fabrication of Stainless Steel and SAF2205 tanks.

I can confirm that GIF Products CC have been both proactive and responsive to project needs.

Any queries and QA/QC requirements that have arisen have been dealt with promptly and efficiently.

GIF Products has consistently delivered excellent service and support to the project and have demonstrated their ability to meet project delivery and QA/QC requirements.

Accordingly, there is no hesitation in recommending GIF Products to any company wanting to enter into an agreement with them.

Signature

Lotfi Mezguia
Pressure Vessel & Welding QA/QC Specialist
HATCH

58 Emerald Parkway Road, Greenstone Hill
Johannesburg, South Africa
Private Bag X20, Gallo Manor 2052, South Africa
Tel: +27 11 239 5300 • Fax: +27 11 239 5790 • www.hatch.com
Hatch Africa (Pty) Ltd.
Reg. No. 196500723/07

15 June 2018

To whom it may concern

Dear Sir/Madam

Reference - GIF Products

It is a pleasure to provide this reference for GIF Products cc.

Hatch has been dealing with GIF Products cc for over 5 years in relation to the supply of various Stainless and Carbon Steel Items, Pipes and fittings, Pipe supports, Gaskets, B7, B8 and B8M stud bolts, Jacketed Piping and Electrical and Instrumentation bulk material for the Tenke Fungurume Mining projects in the Democratic Republic of Congo.

GIF Products has consistently delivered excellent service and support to the project and have demonstrated their ability to meet project delivery requirements.

Accordingly we have no hesitation in recommending GIF Products to any company wanting to enter into an agreement with them.

Yours faithfully,



Wykie Etebeth
Engineering Manager

24 YEARS OF
EXCELLENCE,
KNOWLEDGE
AND
EXPERTISE





GARY FRIEDERICKSEN
MANAGING DIRECTOR
+27(0)82 737 7728
GARY@GIFPRODUCTS.CO.ZA

JANET DE MEYER
GENERAL MANAGER
+27(0)83 236 7165
JANET@GIFPRODUCTS.CO.ZA
PROJECTS@GIFPRODUCTS.CO.ZA

DENESE BEUKES
PROJECTS & SALES EXECUTIVE
+27(0)61 037 9149
ADMIN@GIFPRODUCTS.CO.ZA

MADELEINE SNYMAN
BUSINESS ADMINISTRATOR
+27(0)72 928 6172
QUALITY@GIFPRODUCTS.CO.ZA

IN TIME - ON TIME - EVERY TIME



*EXPANDING
OUR REACH*

GIF Products (Zambia) Limited

GIF Products (Pty)Ltd
Mining-Industrial-Engineering

www.gifproducts.co.za